



Laureate of the
Evens Peace Education Prize



New-Bridge Integrated College

'The School for all the Family'



Celebrating 25 Years of Excellence

1995 - 2020



Contents

| | |
|--------------|--|
| Page 1 | Principal's Welcome |
| Page 2 - 3 | Mission Statement / Head Boy & Head Girl |
| Page 4 - 6 | Pupil Voice |
| Page 7 | Gifted & Talented |
| Page 8 - 9 | The Curriculum |
| Page 10 - 11 | Curriculum and Extra Curricular Activities Gallery |
| Page 12 - 13 | Integrated Education |
| Page 14 - 15 | Pastoral Care |
| Page 16 - 17 | Year 8 Transition |
| Page 18 - 19 | Life After New-Bridge |
| Page 20 - 21 | Examination Results |
| Page 22 - 23 | School Events |
| Page 24 - 25 | Admissions Criteria |





Principal's Welcome

On behalf of the Board of Governors, Staff and Students, I would like to welcome you to our school. New-Bridge Integrated College is an 11 – 18 school which welcomes boy and girls, all abilities and families from catholic, protestant and other traditions. Our school was established in 1995 by parents from the Banbridge and Newry areas, who wanted an integrated education for their children where the values of respect, and tolerance and understanding for each other's tradition is practised every day. 2020 represents a very special year for New-Bridge as we celebrate our 25th anniversary and 25 years of excellence.

At New-Bridge we provide high quality education through a broad and balanced curriculum and our students also enjoy a wide range of extra-curricular activities. Our child centred approach to learning and teaching is built on positive relationships between staff, students and parents. The care and welfare of our students is at the heart of everything we do here in New-Bridge. We are very proud of our school, our excellent record of academic and creative successes ensures progression for all our young people. We offer a quality learning experience for those with gifts and talents, those with a high academic profile and those who require additional support. As our school motto states, we are indeed 'The School for All the family'. I am proud to say that our dedicated and committed staff offer many opportunities for each student to achieve their full potential here and we celebrate the 'personal best' of every student at New-Bridge.

As Laureate of the Evens Peace Education Prize, we play a significant role in promoting our inclusive ethos, developing our young people into well rounded tolerant citizens, who are happy and engaged in their learning and respectful of each other's beliefs and traditions. Our work in promoting peace education is acknowledged by the Northern Ireland Council for Integrated Education (NICIE) through the prestigious 'Excellence in Integration Award'. As an integrated school we celebrate 25 years of providing an authentic integrated experience which provides a 21st century model of education fit for building a prosperous and peaceful 21st century society. We are delighted that under the Fresh Start Agreement Funding, our new school build work continues, with an expected start date for building work of January 2021!

New-Bridge Integrated College is a happy place to learn and work. We have high standards and high expectations, asking that everyone works and learns to their full potential, everyone helps those around them to do their best and everyone develops into a thoughtful caring member of her or his community. It is our integrated ethos; that sense of belonging and our capacity to care which has made our school the success story it is today. Through our school website, prospectus and our Facebook page, we have captured the ethos of our school in word and pictures, as one of inclusion; we hope that your visit to our school enables you to experience first-hand our welcoming, friendly and caring ethos. We look forward to expanding our New-Bridge family in September 2020 by welcoming new students and new families to our school to join with us in our 25th anniversary celebrations.

A. Anderson

Mrs A Anderson
Principal

“The work of the senior leadership team is underpinned by a shared commitment to enabling every pupil to achieve their full potential in an inclusive and supportive learning environment”. ETI Inspection

Mission Statement

“New-Bridge Integrated College is an integrated all-ability school. We are committed to ensuring that all our pupils are provided with the opportunity to achieve to their full educational potential in a challenging and stimulating environment in which they all feel cherished and valued.”



Vision

- To enable our pupils to grow mature in their own beliefs, culture and tradition
- To promote peace and reconciliation by actively seeking knowledge and understanding of other beliefs, cultures and traditions
- To develop in our pupils the self-esteem and self-discipline necessary for responsible citizenship in a pluralistic society.
- To provide a challenging and stimulating environment in which the academic, sporting and personal success of pupils is promoted and celebrated
- To cherish, nurture and respect each other regardless of race, gender or other differences
- To encourage individual spiritual development and to work and pray for peace in our lives
- To promote the involvement of all members of the College community, whether governors, parents, pupils or staff in the development of the College
- To foster a caring and responsible attitude to the College and the local environment
- To create effective links between the College and the wider community

SELF BELIEF
FLEXIBILITY
RESPECT
OPTIMISM INTEGRITY
INTEGRATION
CONCERN FOR OTHERS
OPENNESS TO NEW IDEAS
CURIOSITY
MORAL COURAGE
COMMUNITY SPIRIT
COURAGE
PERSONAL RESPONSIBILITY
TOLERANCE



Caitlin McManus, Head Girl

As Head Girl of New-Bridge Integrated College, it is my privilege to help lead the pupils in our school; a school which has provided me with so many opportunities over the past seven years.

I currently study English Literature, Drama and Health and Social Care at A-Level and I hope to study BSc in Occupational Therapy in the University of Liverpool next year.

New-Bridge has provided an inclusive, integrated and diverse teaching environment helping me to achieve my very best, both inside and outside the classroom. I am ambitious about my future and the college has helped shape me into a resilient, well-rounded and determined member of the school community and society. Being a part of New-Bridge enhances my appreciation of the relationship between pupils and all members of staff – for me, this is a special and unique part of New-Bridge. The endless success stories from New-Bridge are as a result of the school's ability to teach respect, resilience and tolerance. The college ensures that all pupils are accepting of each other, regardless of ability, ethnicity, religion or background. I love being able to learn in such a motivational environment.

I have been able to get involved in leadership programmes such as Habitat for Humanity and Young Enterprise. We were given the opportunity to compete in competitions both at home and at the European Trade Fair in Vienna. I also continue to play a key role in mentoring younger students, providing support, guidance and advice to those who struggle both academically and socially. I take a lot of pride in my role as a mentor – I know that supporting our younger students in school will help with the daunting transition from primary to secondary school.

I am extremely grateful and proud not only to be head girl here at New-Bridge, but to be a pupil of the college. It has been the most memorable and rewarding seven years – I will truly miss it when I leave. However, I am ready to take the skills and qualities New-Bridge have helped me to develop to university and into my future.



Michael Kelly, Head Boy

For the last seven years I have flourished in New-Bridge. Here I have enjoyed the high-quality teaching on offer as well as the opportunity to participate in a varied extra-curricular programme. I am currently studying A-Level Applied Science, ICT and Engineering and hope to go on to study BSC Computer Science at Ulster University.

The experiences I have had in New-Bridge will be ones I will carry with me for the rest of my life. I have made life long friends and have had many opportunities such as, going on the school ski trip, twice to Austria. This opened my eyes to the sport of skiing and gave me an insight into a different culture. I have also been privileged to mentor our junior students in many different areas including Maths and Science. This has given me a lot of confidence and I have developed invaluable leadership skills in my role as mentor and Head Boy. Apart from the skill set that I gained doing this, I am also glad that I could give back to the school that helped shape me and made me into the person I am today. I am proud to be a student here.

In my opinion, the success stories produced by New-Bridge are simply a result of the excellent student-teacher relationships, which ensure that students work towards their very best and that everyone's personal best is celebrated.

New-Bridge is a truly remarkable school at the forefront of teaching, and I am incredibly proud to have studied here. I know that the past seven years here have provided me with the foundations required to excel in university and in my future career.

“Attending an integrated school means everything to me. We are all different and everyone has different talents and abilities.”

New-Bridge Integrated College is important to me because I come from a family with different religious backgrounds. Everyone in New-Bridge is respected regardless of their beliefs.

I never felt confident before I came to New-Bridge. Now I do!

I think New-Bridge is amazing because as well as meeting new friends who have different beliefs, I have also learned about their individual cultures and traditions.

When I came to New-Bridge I met so many different students from different cultures, countries and traditions. I think it is brilliant!”





I was so excited when I heard was going to be a student in New-Bridge. New-Bridge celebrates everyone regardless of their differences I believe that integrated schools are the future.

New-Bridge is a safe space where everyone is included.

I think Integration is the same as 'Everyone is Welcome'

I chose New-Bridge because my friends were students here. I am glad I came to New-Bridge. The teachers are nice and it's a wonderful school that belongs in the world.

I wanted to attend an integrated school so that I could meet friends from different backgrounds.

I love New-Bridge! Going to an integrated school has given me the chance to meet all kinds of people. You can come from any background or culture and feel accepted in New-Bridge.

New-Bridge Integrated College means a lot to me. I have met friends from all different backgrounds. I came to New-Bridge because my big sister was here. New-Bridge is a happy place for me.

What Makes New-Bridge Special

My name is **Grace Cordner** and I am a Year 8 student in New-Bridge Integrated College, I am a past pupil of Edenderry Primary School in Banbridge.

When I was in primary 6 and 7, I went to the open days for all the local post primary schools. I thought most of them were good, but I knew that I wanted to go to New-Bridge as soon as I went there because I really liked everything the school had to offer. I loved the PE department in particular. Our school offers so many clubs and extracurricular activities and I attend lots of them after school every day. My favourite after school is Netball and I go there every Monday.

That's why I made New-Bridge my first choice!



My Name is **Elijah King** and I am a past pupil of St Mary's Primary School, Dechomet, and I am now in Year 8 in New-Bridge. I have really enjoyed my first term and got involved in as many activities as I could. I particularly love English as I find this subject so interesting and the teachers are so good. I have made lots of new friends since joining our school and am on the school football team which has also allowed me to make more new friends. New-Bridge has something to offer all students and I would recommend my school to anyone!

My Name is **Kendall Walker** and I came to New-Bridge from Scarva Primary School. I knew I wanted to come to our school as my brother already attends it and also because so many people had said positive things about the school. I really like how everyone learns together in our school and integrated education is very important to me. All of the teachers and pupils have been so welcoming and kind. My favourite subject is technology and design; I have loved learning how to use the tools to craft my ideas. I attend netball after school and it is such great fun with my friends.



My name is **James Mc Sherry** and I am past pupil of St Francis Primary School, Aghaderg. I have enjoyed my first year in New-Bridge so far and have really enjoyed getting to know everything about my new school. I visited the school open days in primary 6 and primary 7 as my older brother also attends the school and he had told me I would really like it here. I love sport and so I enjoy P.E. and particularly Gaelic and athletics. The Gaelic club after school each week has also been a great way to meet new people so I would recommend this to other students.

My name is **Aine Feerick Quinn** and I am a past pupil of Bridge Integrated Primary school in Banbridge. When I visited New-Bridge's Art department I was absolutely awestruck and I wanted to be part of it! I have loved my first year so far! I really enjoy all of my subjects but especially art, English, P.E., R.E and music. The afterschool clubs are also excellent and I of course attend Art club but also Warhammer club and Media Club where I have met many new friends. I would encourage you to visit our school and you could be part of it too!





“Our Gifted and Talented Programme aims to generate opportunities to challenge all our students.”



The Curriculum at New-Bridge Integrated College

The curriculum in the College is concerned with values and attitudes as well as knowledge and skills. We aim to challenge and support our students to become independent learners, take responsibility for organising their own learning and achieve their best. Our gifted and talented strategy is delivered across the curriculum to stretch students in their learning in and beyond the classroom. Active learning and educational visits support student learning. New-Bridge Integrated College is an active member of the Banbridge Area Learning Community. This collaboration widens our students' opportunities to study courses which meet their needs, aptitudes aspirations and interests and allow for progression to University/Higher Studies or employment.

Key Stage 3

Curriculum Years 8-10

All pupils study the following subjects at KS3 with an additional focus on cross-curricular and transferrable skills

- Art and Design
- Citizenship
- Drama
- Employability
- English
- Spanish
- Geography
- History
- Home Economics
- ICT

Key Stage 4

The Curriculum for Years 11-12 provides a varied menu of applied and general GCSEs and BTEC courses. It provides our students with tailored pathways best suited to their academic strengths and career aspirations. Our students will make course choices following a rigorous and lengthy options process, which includes; discussions with subject teachers, individual career interviews and a meeting with each pupil and their parents.

- Art and Design
- Business Studies
- Construction
- Creative Media (BTEC)
- Digital Technology (ICT)
- Drama
- Engineering (BTEC)
- English Language

Sixth Form

The Sixth Form Curriculum matched to our students' abilities and aspirations and is correct at time of print.

- Art and Design
- Business Studies
- Biology
- Chemistry
- Creative Media (BTEC)
- Design & Technology
- Drama & Theatre Studies
- Engineering (BTEC)
- English Literature
- Geography
- Health & Social Care
- History
- Home Economics
- ICT

“The pupils spoke respectfully about the support provided by the staff and expressed their appreciation and enjoyment of a broad range of additional learning experiences beyond the classroom” - ETI Inspection



- ▶ Learning for Life and Work
- ▶ Mathematics with Financial Capability
- ▶ Music
- ▶ Personal Development

- ▶ Physical Education
- ▶ Religious Studies
- ▶ Science
- ▶ Technology and Design

- ▶ English Literature
- ▶ HE Food and Nutrition
- ▶ Geography
- ▶ History
- ▶ HE Child Development
- ▶ ICT (BTEC)
- ▶ French/Spanish
- ▶ Further Mathematics
- ▶ Mathematics
- ▶ Music

- ▶ Occupational Studies
- ▶ Physical Education
- ▶ Princes Trust
- ▶ Religious Studies
- ▶ Science Double Award
- ▶ Science Single Award
- ▶ Sports Studies (BTEC)
- ▶ Technology and Design

- ▶ Mathematics
- ▶ Music
- ▶ Physics
- ▶ Psychology
- ▶ Public Services (BTEC)
- ▶ Religious Studies
- ▶ Software Systems Development

- ▶ Sports Studies (BTEC)
- ▶ Technology and Design

Curriculum



Extra Curricular Activities



- | | |
|--------------------------------|-----------------|
| Art Club | Gaelic Football |
| Bio Diversity Team | Geography Club |
| Camogie | Hockey |
| Chamber Choir | Homework Club |
| Computer Programming | ICT |
| College Choir | Maths Club |
| Cookery Club | Music Theory |
| Cross Country Running | Netball |
| Digital Media Club | Reading Club |
| Drama Club | STEM club |
| Boys' Football | Warhammer Club |
| Girls' Football | |
| FIN (Fellowship in New-Bridge) | |



“The pupils needs, interests and aspirations are central to curriculum design and review across the Key Stages. The broad and balanced curriculum is extended and enhanced well by a diverse choice of enrichment and extra-curricular opportunities” - ETI Inspection



Integrated Education



What Integrated Education Means to Me

The Carson Awards are named in honour of the legendary Northern Ireland Comedian Frank Carson who was a passionate supporter of integrated education. The Awards aim to support students who are interested in demonstrating ‘what integration means to me’ through their creative talents. The awards are of great benefit to the individual winners, the integrated schools they attend and the wider Integrated Education Movement in Northern Ireland. New-Bridge Integrated College students Sancia Kennedy, Deimante Keturakyte, Toni Maginess and former Head Girl, Katie McCauley, were acknowledged at the Ormeau Baths Gallery in Belfast on 17 October to celebrate the winners of the annual Carson Awards. Sancia opened the ceremony with a live performance of her song entitled ‘Change’ which she had performed just the week before at the Hacking Hate conference in Brussels. The pupils are pictured with their teachers, Tony Carson and Olivia Nash MBE.



The Carson Bursary has given me the confidence to believe in my own abilities and to understand that I really do have a voice and I can be listened to. If we are the architects of the future and we are the generation that will be making decisions and choices that point towards a more positive future.

Deimante Keturakyte age 16



The Carson Bursary has given me the opportunity to write and record my own song “Change” which I performed at the Selma conference in Brussels. I believe Integration is a Building Block in exposing young people to other cultures and beliefs. I find learning about my friends’ beliefs and opinions extremely fascinating and fun. I think everyone should have the chance to experience different ideas without prejudices.

Sancia Kennedy age 14



“It’s not what you look at that matters, it’s what you see.” - Henry David Thoreau.

My work for the Carson Prize is about how we, in integrated schools, try to reinforce inclusive values every day in our daily lives. We have chosen to be part of the integrated education system and because of this we try our best to share the values of respect, inclusivity, tolerance for others and an appreciation of other’s differences.

Toni Magennis age 15

“The Pupils have a strong sense of identity, and pride in their school..” - ETI Inspection

“New-Bridge Integrated College continues to break new ground in relation to integrated education in Northern Ireland.”

Evans Prize for Peace Education, International jury of experts.



New-Bridge Integrated College was instrumental in creating cross border links to share good practice and develop relationships with schools in the South of Ireland. This created opportunities for our pupils to establish new friendships and learn more about other young people. An idea for an Art Project was conceived and our journey to develop new cross border links, north and south began. The project ‘Our Identity’ linked our school with St Louis Dundalk and St Columcilles in Dublin and also involved Glencree and Corrymeela, who were instrumental in shaping the project. Throughout the year, the students engaged in mini art projects based on the theme of ‘peace’ and ‘celebrating identities’ to create a design for a permanent sculptural art piece for each school. The final showcase took place in Dundalk Museum when the students met up again and the art work was revealed.



Funded by The Department of Foreign Affairs, Ireland - Peace & Reconciliation Fund

Pastoral Care

At New-Bridge Integrated College we recognise that being nurtured in a positive and respectful way is crucial to the social, physical, emotional, cognitive and spiritual personal development of our pupils. Our Pastoral system supports our pupils, helping them to develop as responsible, independent young adults, able to fulfil their potential and play an active, caring role in our community. New-Bridge is a happy place to learn and work; all members of staff share pastoral responsibility for our pupils by encouraging them to become responsible, self-motivated young people who respect themselves and others.

Core Values

At New-Bridge our rules and policies revolve around our three Core Values – Responsible, Ready and Respect. These Core Values underpin all that we do, and we work together to actively promote our Integrated ethos through the creation of an atmosphere of mutual respect, which can be achieved through courtesy and concern for others.



Year 8

Our Year 8 Pupils are supported by:

- Sixth Form Mentors who support our Year 8 through their transition phase.
- A Form Tutor, who they will meet each morning with their Form Class, to begin their day positively and who will deliver a weekly Learning for Life and Work programme, focussing on Personal Development, Citizenship and Employability.
- A Year Co-ordinator who supports the work of the Pastoral Team, and is the main contact with parents, providing both Pastoral and Academic support to each individual pupil.
- A Head of Pastoral Care, who oversees all Pastoral Care in the College, in conjunction with the Principal and Vice Principal.

Our carefully planned Year 8 Induction Programme encourages good communication and partnership between home and school, with opportunities for regular updates during this important transition phase. This Induction Programme continues with a tailored Preventative Curriculum helping to give our pupils the knowledge and skills they need to keep themselves safe.



“The older pupils play an important role in the care and welfare of younger pupils and carry out a range of responsibilities with maturity and sensitivity. These leadership roles develop well their personal, social and employability skills.” - ETI Inspection

Safeguarding Team

Here at New-Bridge the care, welfare and safety of each individual is of the utmost importance. In addition to our Pastoral Teams, our Safeguarding Team provide essential support for any situation where our pupils may feel at risk. Safeguarding Information posters are on display throughout the College, and this team includes support from our Education Welfare Officer and our College Counsellor, in addition to our College staff.



Resilience

A key part of our Pastoral work focusses on developing Resilience in our pupils, which will help support their personal and academic progress. At KS3, our Resilience Programme centers around the concepts of 'I have, I can, I am', and at KS4 our Programme is called 'Gimme 5', focussing on the 5 Ways to Well-being. We also have a one-mile route marked out around the College for our pupils and staff to use, to help with our Positive Mental Health promotion.



Restorative Approaches at New-Bridge

Through our Pastoral Care and Positive Behaviour Management systems we promote Restorative Approaches to encourage positive pupil behaviour. We recognise the need for diverse approaches in promoting positive behaviour, so there is a collaborative and all-inclusive approach to meeting the needs of our pupils.

The goals of Restorative Approaches at New-Bridge College are to:

- Encourage self-reflection to enhance positive behaviour
 - Encourage accountability and responsibility for actions
 - Encourage all pupils to be valuable contributing members of the school.
 - Promote an increased sense of community within the school.
- We are proud of our restorative practices which are embedded in our school ethos which contribute towards building relationships and teaches our pupils the importance of compassion.



**Ready
Responsible
Respect**

The 'New-Bridge' Way

We are Ready to learn

We are Responsible young people

**We Respect ourselves, others
and our school**

"In discussions with the inspectors, the pupils reported that they feel safe and happy in school.." - ETI Inspection



Supporting The Move from Primary School

We recognise that making the transition from primary to post-primary school can be an exciting but sometimes also a daunting experience. We aim to ensure that each student feels happy and secure in their move to New-Bridge Integrated College, and we provide several opportunities for students to get to know us before they officially begin school in September.

In June we invite all incoming Year 8 students to the college for an Induction Programme. Part of this process involves students getting to know their Form Teacher, their Year Co-ordinator and meeting other students in their year group. This programme also provides students with an opportunity to familiarise themselves with the building and some of the college routines. Parents are also invited to an information evening to aid the smooth transition of their son or daughter to New-Bridge Integrated College.

In September, students are supported in their first term, they work closely with sixth form mentors and peer mentors as well as attending a team building day to help develop relationships their peers. Close parental partnerships are forged early and continue to develop throughout our students' school career. There is a welcome evening for students and parents, closely followed by a parent tutor day in early October, which provides a progress report following their first few weeks in our school. Subject specific feedback from all teachers is also provided in Term 2 at the parent teacher day, underlining the strong school-parental partnerships we develop in our College.

We value our links with our feeder primary schools and make a concerted effort to liaise with primary school staff to ensure that we have the most up to date information about our incoming year 8 students. Form Teachers and all staff make sure that all our students, and particularly our year 8 students are well supported as they grow accustomed to life at New-Bridge.

We take our duty to care for our students very seriously and believe that happy learners will learn better and achieve more.

The College Day

Many of our students travel to and from the College by bus. The day begins with form class at 9am and classes finish at 3.20pm. Lunch is available in the canteen from 12.10pm with an extensive selection of food available catering for all dietary needs. The payment system is very supportive for children receiving free school meals. Students are also welcome to bring a packed lunch. There is a range of extra-curricular activities and clubs on offer at the College.

An example of a typical year 8 timetable is shown below:

| Days/Periods | Monday | Tuesday | Wednesday | Thursday | Friday |
|-------------------------|--------------|--------------|--------------|--------------|--------------|
| 9:00-9:20 | Registration | Registration | Registration | Registration | Registration |
| Period 1 9.20- 10.10 | Science | PE | Science | History | Drama |
| Period 2 10.10-11.00 | English | PE | Maths | English | RE |
| Break 11.00-11.20 | Break | Break | Break | Break | Break |
| Period 3 11.20-12.10 | Technology | Maths | Art | English | English |
| Period 4 12.10-12.55 | Lunch | Lunch | Info Sys | Lunch | Spanish |
| Period 5 12.55-1.40 | Info Sys | Maths | Lunch | Geography | Lunch |
| Period 6 1.40-2.30 | Llw | Drama | Music | Music | Science |
| Period 7 2:30-3:20 | Spanish | Technology | History | Maths | Home Econ |



Life After New-Bridge

In New-Bridge ,we provide high quality careers, education, information, advice and guidance. Our pupils have a very good understanding of the world of work and of the education, training and employment opportunities that are available locally and regionally. Our range of career learning activities are well integrated into the curricular provision in our College and meet very effectively the needs of our pupils.

New-Bridge Leavers:

We are delighted to report that this year, along with record breaking examination results, 92% of our students secured university and further education places, in an ever increasingly competitive climate. It is with a great sense of pride that we can report such successful progression of all our students.

The full range of our leavers' destinations is available on the College website and is on display throughout our school.

LEAVERS' DESTINATIONS. - Higher Education (67%), Further Education (25%), GAP (5%), Training & Employment (3%).



Alex Mitchell
BSc (HONS) Computing for Games
University of Falmouth



Conor Burns
BA (HONS) Music Production
University of Lancashire



Dahnyaal Syed
MSc Advanced
Mechanical Engineering



Dylan Wilkinson
MA International Business Law
Queens University, Belfast



Emma Beckett
BA (HONS) Primary Teaching
Liverpool Hope University



James Canniford
BSc (HONS) Computer Science
Ulster University, Jordanstown



Jude Mayger
MA Pharmacy
Ulster University, Coleraine



Niamh King
PGCE Primary Education
Liverpool Hope University



Rachael Clydesdale
BSc (HONS) Business Studies
Ulster University, Jordanstown



Shannon McNeilly
BA Media Studies and Production
Ulster University, Coleraine

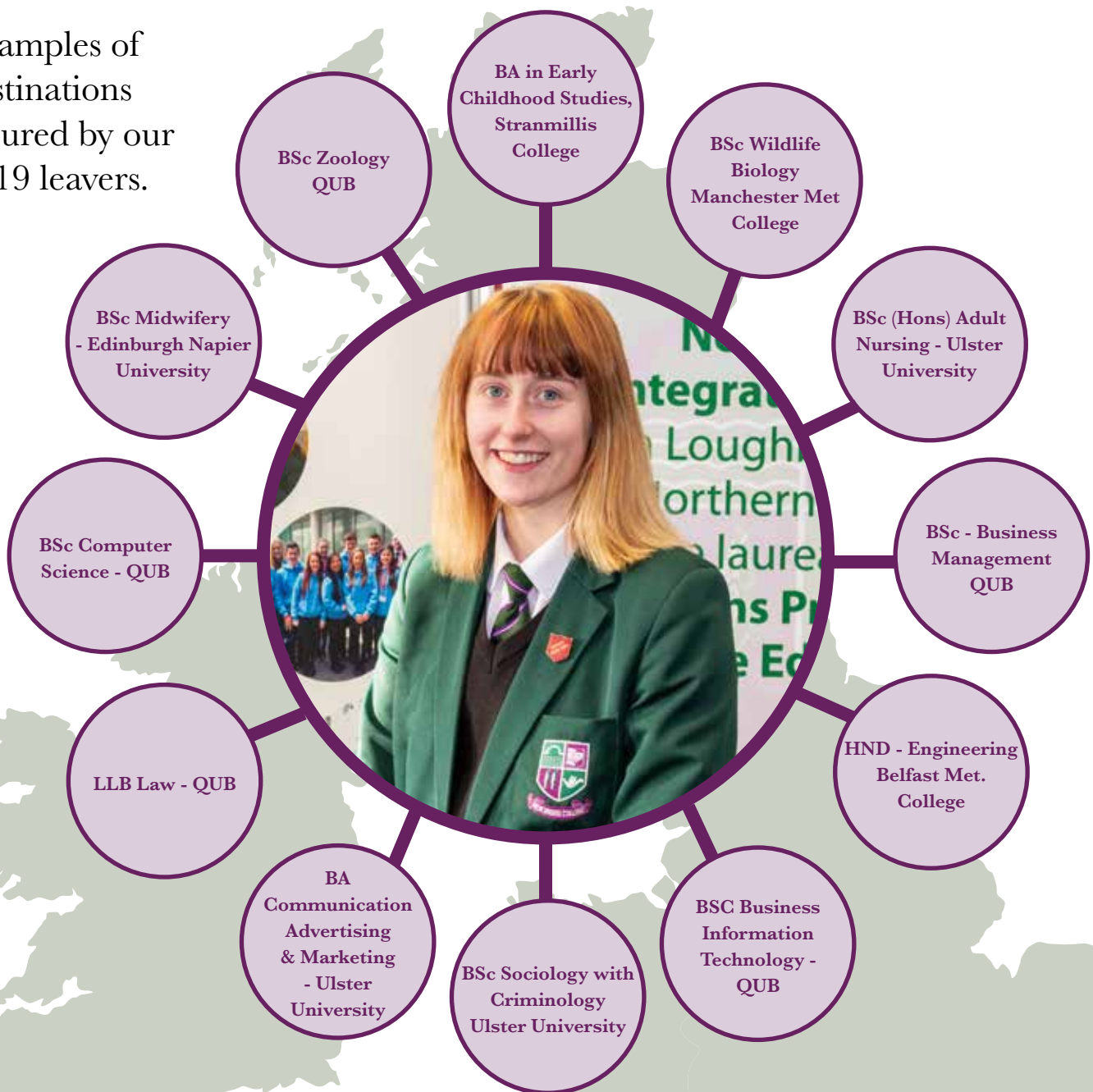


Rachel McDonnell
BSc (Hons) in Psychology
Ulster University, Magee.



Rachel Ryan - First Class BA (Hons) in
Special Educational Needs with Sport
& Physical Education, Liverpool Hope

Examples of destinations secured by our 2019 leavers.



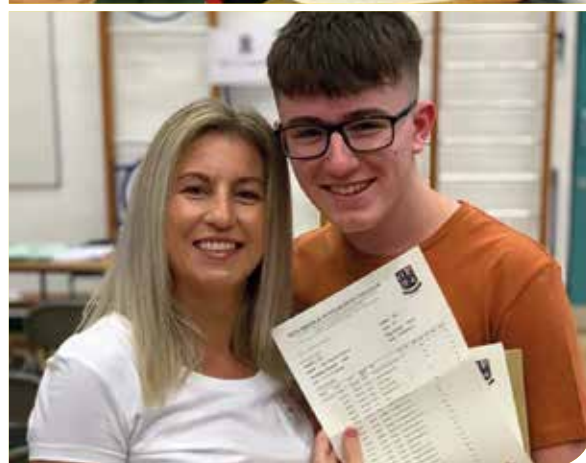
“In discussions with Inspectors, the pupils reported that they value the careers education, information, advice and guidance provided by the school, and they are well informed about subject choices and career pathways , particularly at key transition points”.

ETI Inspection

GCSE Examination Results

(3 year trend)

| Subject | %A*-G | %A*-C |
|-----------------------------|-------|-------|
| Art | 100 | 90 |
| Business Studies | 97 | 54 |
| Child Development | 100 | 57 |
| Construction | 100 | 85 |
| Design Technology | 100 | 81 |
| Drama | 100 | 97 |
| English Language | 100 | 78 |
| English Literature | 100 | 97 |
| French | 100 | 100 |
| Geography | 100 | 45 |
| History | 100 | 78 |
| Home Economics | 100 | 54 |
| ICT | 100 | 69 |
| Maths | 100 | 74 |
| Further Maths | 100 | 80 |
| Music | 100 | 93 |
| Religious Studies | 100 | 73 |
| Science Double Award | 100 | 76 |
| Science Single Award | 100 | 79 |
| Spanish | 100 | 83 |
| Sport/PE Studies | 100 | 77 |
| Occupational Studies | 100 | 100 |
| BTEC Level 2 Creative Media | 100 | 100 |
| BTEC Level 2 Engineering | 100 | 60 |
| BTEC Level 2 ICT | 100 | 100 |
| BTEC Level 2 Sports Studies | 100 | 100 |



Highest performing GCSE student *Kyle Martin* (left) 2A*, 7A grades & 1 B grade.

Overall GCSE Performance for New-Bridge Integrated College 2019

**GCSE 5+A*-C Grades 87%
(NI Average of 77%)**

A Level Performance

| Subject | %A*-E | %A*-C |
|-------------------------------------|-------|-------|
| Art | 100 | 100 |
| Applied Science | 100 | 100 |
| Biology | 96 | 74 |
| Business Studies | 100 | 92 |
| Chemistry | 100 | 50 |
| Computer Studies / Computing | 100 | 100 |
| Design & Technology | 100 | 50 |
| Drama | 100 | 100 |
| English Literature | 100 | 96 |
| Geography | 100 | 100 |
| Health & Social Care - Double Award | 100 | 100 |
| Health & Social Care - Single Award | 100 | 75 |
| History | 100 | 93 |
| ICT | 79 | 68 |
| Maths | 92 | 75 |
| Music | 100 | 100 |
| Physics | 93 | 62 |
| Psychology | 100 | 93 |
| Religious Studies | 94 | 74 |
| BTEC Level 3 Creative Media | 100 | 100 |
| BTEC Level 3 Children's Care | 100 | 100 |
| BTEC Level 3 Engineering | 100 | 100 |
| BTEC Level 3 Sports Studies | 100 | 100 |
| BTEC Public Services | 100 | 100 |



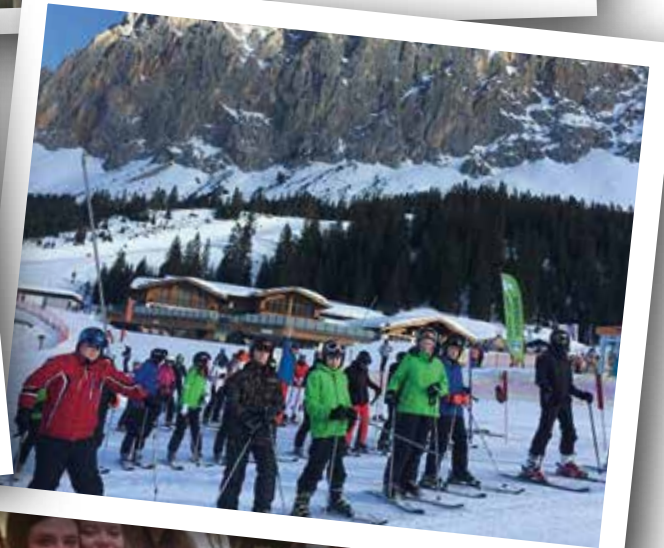
Top Performing student Jack Whyte past pupil of Cloughoge Primary School achieved Dist* A & B grades

Overall A Level Performance for New-Bridge Integrated College 2019

New-Bridge 3A*-E 80%

School Events





Respective functions of the Board of Governors and Principal in relation to Admissions to the School.

The criteria are drawn up by the Board of Governors, which may delegate the application of them to an Admissions Committee. Any reference herein to the term Board of Governors includes any committee or subcommittee appointed by the Board of Governors for the purposes of applying the Admission Criteria set out herein. The Board of Governors may require the support of the College's administrative staff in order to fulfil its duties and they are so authorised by the Board of the Board of Governors.

ADMISSION CRITERIA YEAR 8 (2020/2021)

It is important for parents and primary school principals to be aware, that since its foundation, the College welcomes pupils of all-ability including those achieving grades in the Transfer Test.

Admission Criteria

The Board of Governors will seek to reflect in the total number admitted to the College a balance between the two main traditions in Northern Ireland. In order to achieve this, places will be allocated as follows:

| | |
|-----------------------|-----|
| Protestant tradition: | 45% |
| Catholic tradition: | 45% |
| Others: | 10% |

The criteria, set out below will be applied consecutively and separately to each of the above three categories. If there are fewer applicants than places available in any one category, then the balance of the places will be divided equally between the remaining two categories. Should an odd number of places remain, then the additional place will be allocated to the category which has the greater number of applicants. Should an odd number of places remain and the number of applications be equal in both categories, then the additional place will be allocated to the category which represents the minority tradition on roll, in the College, at any time of the Admissions procedure. If there are fewer applicants than places in two categories, then both balances of places will be allocated to the remaining category.

The religious affiliation of a pupil will be determined by the religious affiliation noted on or attached to the Transfer Form. If this information is not provided on the Transfer Form the religious affiliation will be determined by the category of primary school which the pupil attends i.e. Controlled or Maintained. The Board of Governors reserves the right to verify religious affiliation as recorded in the Primary School Information Management System.

Criteria for Admission to Year 8 September 2020/2021

The criteria shall be applied in the order set out below first to all applicants choosing New-Bridge Integrated College as their first choice of post-primary school,

then to those choosing New-Bridge Integrated College as second choice and so on as required.

1. First Preference Applicants who have a brother(s) and/or sister(s) enrolled /formerly enrolled in the College. (See procedures in the event of oversubscription)
2. First Preference Applicants who are the eldest child/eldest eligible child.
 - Whose parent/guardian is a member of the College staff who has been in the salaried employment of New-Bridge Integrated College for a period of no less than twelve consecutive months on 1 March 2020.
 - A Governor of New-Bridge Integrated College for a period of no less than twelve consecutive months on 1 March 2020, or a former member of the Board of Governors who completed a full term of office. Applicants so described are regarded as equal. (See procedures in the event of oversubscription)
3. First Preference Applicants who are the eldest child in the family or the brother/sister of a First Preference eldest child whose admission to Year 8 at the time of the Transfer Procedure was refused on a previous year due to oversubscription. Applicants so described are regarded as equal. (See procedures in the event of oversubscription)
4. First Preference Applicants who are not the eldest child (See procedures in the event of oversubscription)

Procedures in the event of oversubscription

In the event of oversubscription occurring at any of the above criteria then selection for places at that criterion will first be made with preference being given to pupils transferring from an integrated primary school. Information in relation to primary school is taken on the basis of the primary school attended at the time the Transfer Form is signed.

If oversubscription still occurs, then preference will be given to First preference applicants who are the eldest child and whose parent is a former pupil of New-Bridge Integrated College. The name of the parent and the dates they attended New-Bridge must be clearly stated on the transfer form.

If oversubscription still occurs, then selection for places remaining at that stage will be made by drawing a lot among the applicants under that criterion. The lottery procedure will be conducted by the principal and two other staff members or governors.

NOTES FOR INFORMATION

1. It is a matter for parents to ensure that all the necessary information required by the College in order to apply its criteria is provided on or attached to the Transfer Form. In particular, it is important for parents to make it clear on or attached to the Transfer Form that they are claiming a relationship under Criterion 1 or Criterion 2. It is also the responsibility of parents to indicate on or attached to the Transfer Form information relevant for consideration under Criterion 3. Where parents certify that the applicant is the eldest child in the family, or the only child in the family for whom transfer to a post-primary integrated school has been possible since and including 1st September 1995 when New-Bridge Integrated College was founded or is the brother or sister of an elder child whose admission to Year 8 at the time of the Transfer Procedure was refused on a previous year due to oversubscription, this must be clearly stated on or attached to the Transfer Form.

2. In the case of multiple births in a family, such children are regarded as equal.

3. Long term foster children placed within a family where a son and/or daughter of the 'fostering' family is enrolled at the College, qualify for admission at Criterion 1.

Duty to Verify

The Board of Governors reserves the right to verify any information supplied on or attached to the Transfer Form and to obtain any information required to fulfil its admissions procedure. The Board of Governors wish to state that inaccurate or misleading information provided on or attached to a Transfer Form may prejudice an offer of a place and may lead to the withdrawal of a place awarded to an applicant who has thereby gained an improper advantage.





New-Bridge Integrated College Prayer

May God give blessings

On all whose lives build our school

Both parent and child

Both young and old

Both wisdom and youth

Stranger and friend

Both male and female

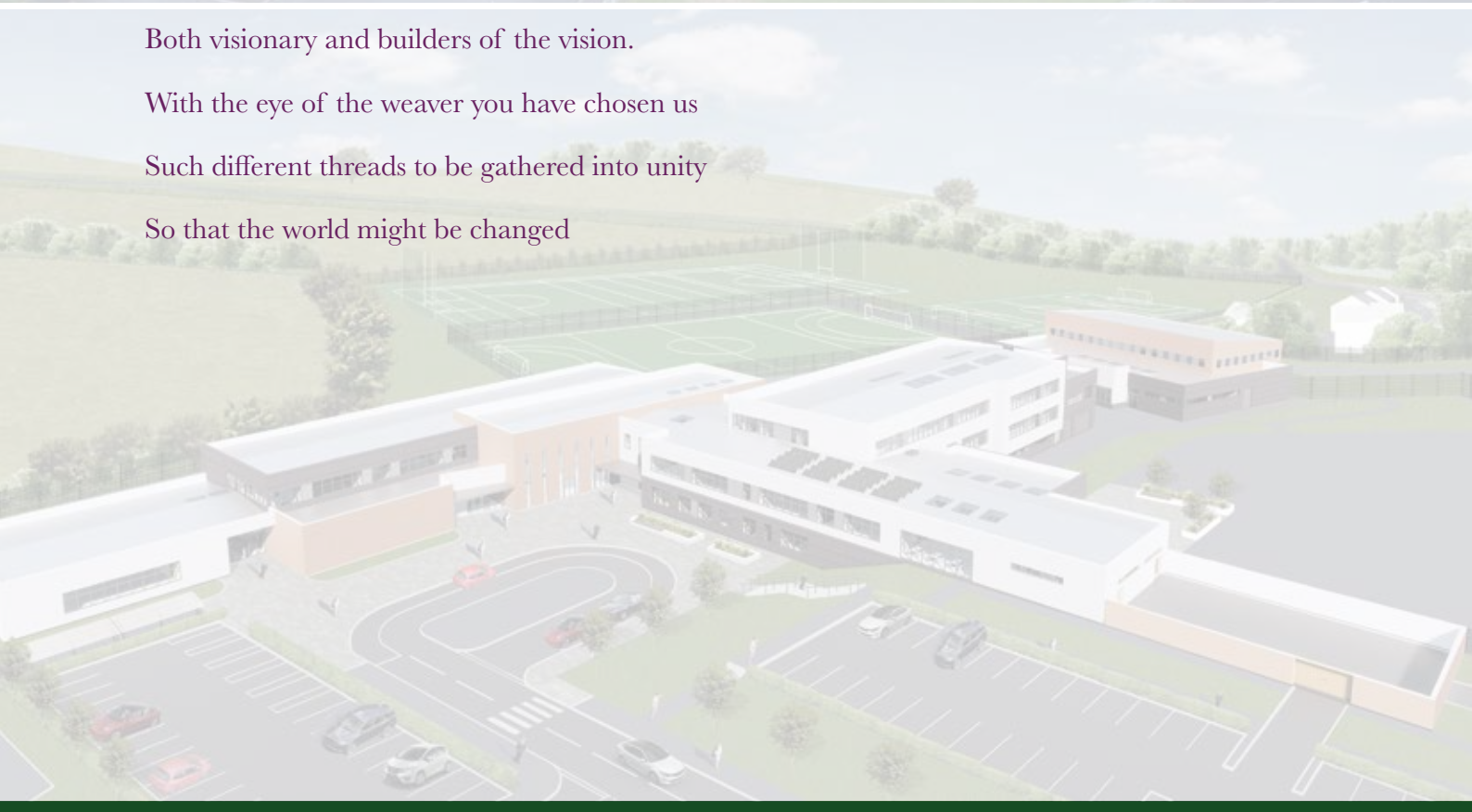
Catholic, Protestant and others

Both visionary and builders of the vision.

With the eye of the weaver you have chosen us

Such different threads to be gathered into unity

So that the world might be changed



New-Bridge Integrated College

25 Donard View Road
Loughbrickland
BT32 3LN

Tel. (028) 406 25010

Fax. (028) 406 22503

email. Info@newbridgecollege.loughbrickland.ni.sch.uk

www.newbridgeintegrated.org



[@newbridgeintegrated.org](https://www.facebook.com/newbridgeintegrated.org)